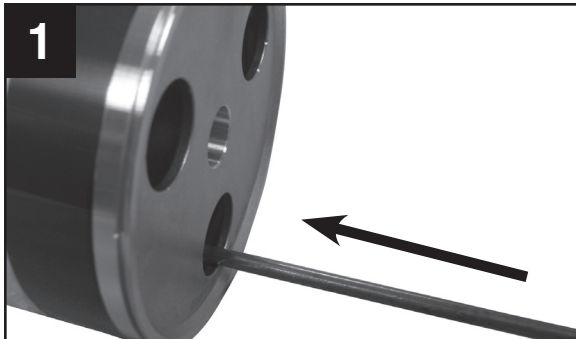


# Installation Instructions

*Drum Flange Replacement for  
Konica Minolta bizhub PRO 1051-series (DR-011)  
PRO 951 / PRESS 1052 series (DR-012) MFPs*

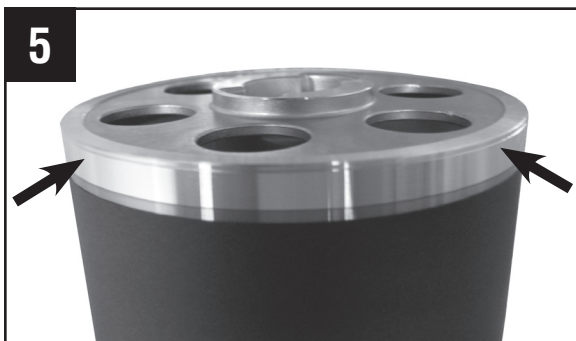
INSTRUCCIONES DE INSTALACIÓN  
INSTRUCTIONS D'INSTALLATION  
INSTALLATIONSANLEITUNG  
ISTRUZIONI PER L'INSTALLAZIONE  
INSTRUÇÕES DE INSTALAÇÃO



Remove aluminum flanges from used OPC drum by inserting a long screwdriver or small shaft/rod through one of the flange holes to tap out the flange on opposite end. Reposition used drum and repeat process to remove second flange.



Position aluminum flange on new OPC drum and tap flange into position. Confirm flange is completely flush with drum substrate around the entire circumference. Repeat process to install second flange.



Flanges must be flush around entire circumference (no visible gaps).