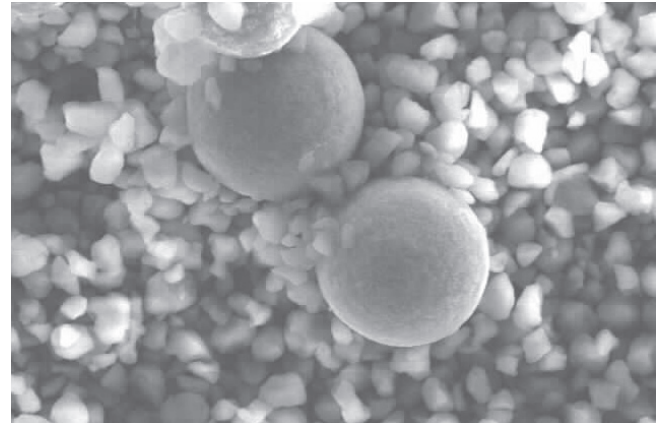


# Trickle Feed Toner

## from Katun®



Magnification 1,000x

### What Is Trickle Feed Technology?

Trickle feed technology, often referred to as “trickle feed replenishment,” is defined as an imaging system that utilizes two-component developer (carrier/toner) where the toner and fresh (non-deteriorated) carrier are continuously, gradually, added together in a “trickle” process over the life of the toner cartridge. This is superior to the traditional method where the carrier is only replenished during a scheduled intervention (after the page yield of the carrier/toner mix has reached a designated point), resulting in longer life and extending the replacement maintenance period of the developing unit.

The trickle feed process results in more consistent, stable imaging performance versus the traditional method.

### Katun Trickle Feed Toners Provide:

- Outstanding image quality
- OEM-equivalent yields
- Consistent performance
- Lower cost & better value



### Cracking the Trickle Feed Code - How You Benefit

In trickle feed imaging systems, a unique combination of toner and carrier is required. For an aftermarket supplier to provide trickle feed toners, they must have a thorough understanding of the technology in order to ensure OEM-equivalent image quality and reliable performance. And they must do it without infringing on any existing Intellectual Property (IP) rights.

Katun, through its research and development efforts, relationships with world class manufacturers, and its exhaustive IP analysis, is able to offer trickle feed toners for several popular OEM machines.

Katun offers both OEM-equivalent yields and outstanding image quality at a lower price than OEM toners. We give you the power of choice, a better value than the OEM products, and provide competitive pressure that keeps the OEM price from skyrocketing.

To order, or for more information, contact your Katun representative or visit us online at [www.katun.com](http://www.katun.com).

## Katun Trickle Feed Toners are Now Available for use in these Models

	Models
Color (C,M,Y,K)	Canon C3325 series
	Canon C5030 series
	Canon C5045 series
	Canon C5535 series
	Canon C7055 series
	Konica Minolta C224 series
	Konica Minolta C368 series
	Konica Minolta C454 series
	Konica Minolta C458 series
	Konica Minolta C552/C652 series
	Kyocera 2552ci series
	Kyocera 3050ci/3550ci series
	Kyocera 3252ci series
	Kyocera 4550ci/5550ci series
	Olivetti d-Color MF 3253
	Olivetti d-Color MF2553 series
	Sharp MX3070 color series
	Toshiba 5540C series
	Triumph Adler / Utax 2506ci series
	Triumph Adler / Utax 3206ci
Utax 1930/1935 series	
Xerox 7525 series	
Xerox 8030 series	

	Models
Black/Monochrome	Konica Minolta C220 series (Black only)
	Konica Minolta C227 series (Black only)
	Konica Minolta 224e series
	Konica Minolta 227 series
	Konica Minolta C452 series (Black only)
	Konica Minolta 454e series
	Kyocera 3500i/3501i series
	Kyocera 4002i series
	Kyocera 6500i/8000i series
	Olivetti d-Copia 4000 MF series
	Triumph Adler / Utax 4056i series
	Utax 1435 series

To order, or for more information, contact your Katun representative or visit us online at [www.katun.com](http://www.katun.com).