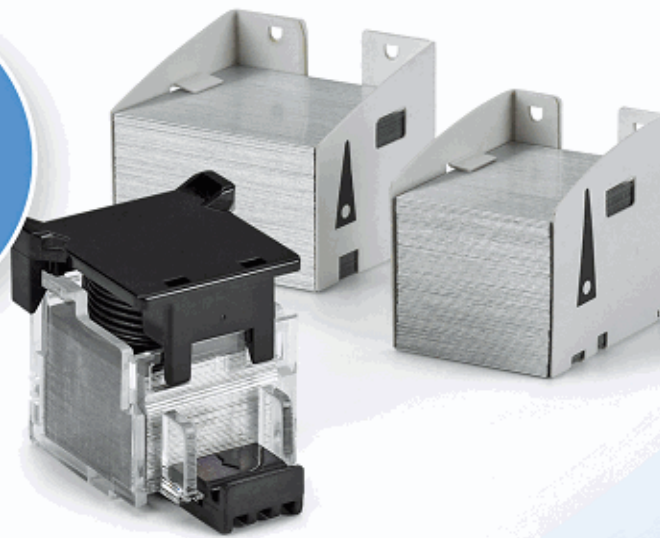


STAPLE CARTRIDGE

Cross-Reference Guide

FOR
COPIERS
& MFPS

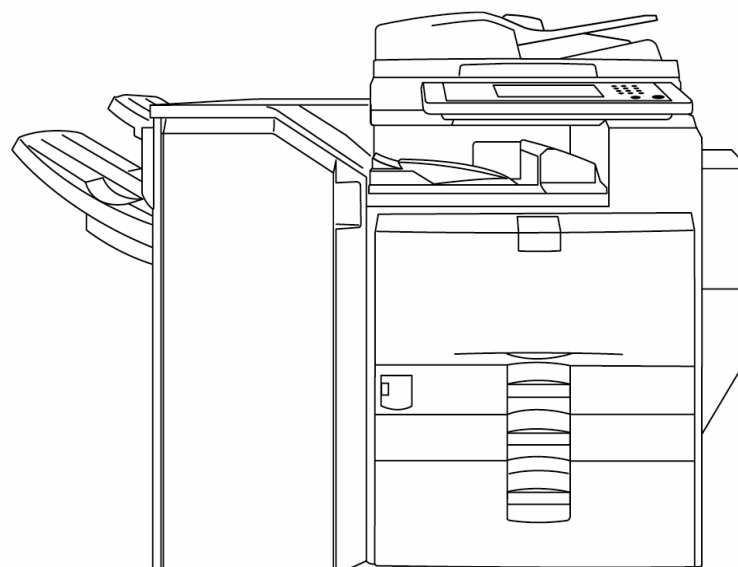


Europe 2020

Swingline®

IMPORTANT NOTE: In order to purchase the correct staples for your machine, it is important that you reference the **FINISHER** Model Identification Number. **DO NOT purchase staples based on the copier model number alone.**

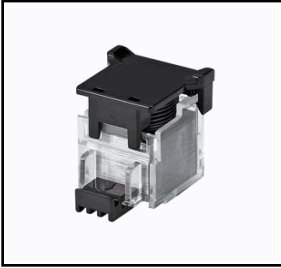
To locate the FINISHER Model Identification Number, first identify the finisher unit in relation to the copier unit. In most instances you will need to separate the finisher unit from the copier unit to access the model information. The location of the FINISHER Model Identification Number will vary depending on the model manufacturer.



Finisher Unit

Copier/MFP Unit

Canon



Katun Part Number

36749

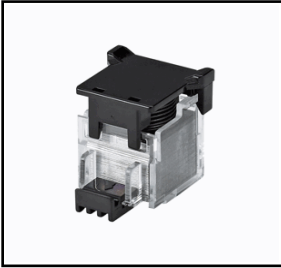
Type Size (mm)
D2 26x25x32

Your Price:

Finisher	Model	OEM Part Number		
		0250A002AD	F23-2930-000	STAPLE-D2
FINISHER-AE1	IR 3025	✓	✓	✓
	IR 3030	✓	✓	✓
	IR 3035	✓	✓	✓
	IR 3045	✓	✓	✓
	IR 3225	✓	✓	✓
	IR 3230	✓	✓	✓
	IR 3235	✓	✓	✓
	IR 3245	✓	✓	✓
FINISHER-C1	GP 285	✓	✓	✓
	GP 335	✓	✓	✓
	GP 405	✓	✓	✓
	IR 2016	✓	✓	✓
	IR 2018	✓	✓	✓
	IR 2020	✓	✓	✓
	IR 2022	✓	✓	✓
	IR 2025	✓	✓	✓
	IR 2030	✓	✓	✓
	IR 2318	✓	✓	✓
	IR 2320	✓	✓	✓
	IR 400	✓	✓	✓
	IR ADVANCE C 2020	✓	✓	✓
	IR ADVANCE C 2025	✓	✓	✓
	IR ADVANCE C 2030	✓	✓	✓
	IR ADVANCE C 5030	✓	✓	✓
	IR ADVANCE C 5035	✓	✓	✓
	IR ADVANCE C 5045	✓	✓	✓
	IR ADVANCE C 5051	✓	✓	✓
	FINISHER-G1	IMAGECLASS 4000	✓	✓
IR 3250		✓	✓	✓
IR ADVANCE 4025		✓	✓	✓
IR ADVANCE 4035		✓	✓	✓
IR ADVANCE 4045		✓	✓	✓
IR ADVANCE 4051		✓	✓	✓
IR ADVANCE 4225		✓	✓	✓
IR ADVANCE 4235		✓	✓	✓
IR ADVANCE 4245		✓	✓	✓
IR ADVANCE 4251		✓	✓	✓
IR ADVANCE 8205		✓	✓	✓
IR ADVANCE 8285		✓	✓	✓
IR ADVANCE 8295		✓	✓	✓
IR ADVANCE C 3320		✓	✓	✓
IR ADVANCE C 3325		✓	✓	✓
IR ADVANCE C 3330		✓	✓	✓
IR C 2100		✓	✓	✓
IR C 2105		✓	✓	✓
LBP 72	✓	✓	✓	
MOT- B1	GP 210	✓	✓	✓
	GP 215	✓	✓	✓
	GP 220	✓	✓	✓
	GP 225	✓	✓	✓
	IR 2230	✓	✓	✓
	IR 2830	✓	✓	✓
	IR 3530	✓	✓	✓

**This document does not constitute an agreement for a price or sale. Prices shown are subject to change without notice. Contact your Katun sales representative for the current pricing information.

Canon



Katun Part Number

36749

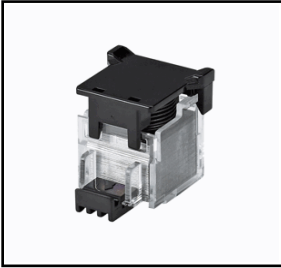
Type Size (mm)
D2 26x25x32

Your Price:

Finisher	Model	OEM Part Number		
SADDLE FINISHER D2		0250A002AD	F23-2930-000	STAPLE-D2
	GP 555	✓	✓	✓
	GP 605	✓	✓	✓
	GP 605P	✓	✓	✓
	IR 550	✓	✓	✓
	IR 600	✓	✓	✓
SADDLE FINISHER F2		0250A002AD	F23-2930-000	STAPLE-D2
	IR 5000	✓	✓	✓
	IR 6000	✓	✓	✓
	IR 6020	✓	✓	✓
SADDLE FINISHER H2		0250A002AD	F23-2930-000	STAPLE-D2
	IMAGECLASS 4000	✓	✓	✓
	IR 3250	✓	✓	✓
	IR ADVANCE 4025	✓	✓	✓
	IR ADVANCE 4035	✓	✓	✓
	IR ADVANCE 4045	✓	✓	✓
	IR ADVANCE 4051	✓	✓	✓
	IR ADVANCE 4225	✓	✓	✓
	IR ADVANCE 4235	✓	✓	✓
	IR ADVANCE 4245	✓	✓	✓
	IR ADVANCE 4251	✓	✓	✓
	IR ADVANCE 8205	✓	✓	✓
	IR ADVANCE 8285	✓	✓	✓
	IR ADVANCE 8295	✓	✓	✓
	IR ADVANCE C 3320	✓	✓	✓
	IR ADVANCE C 3325	✓	✓	✓
	IR ADVANCE C 3330	✓	✓	✓
	IR C 2100	✓	✓	✓
	IR C 2105	✓	✓	✓
	LBP 72	✓	✓	✓
SADDLE FINISHER K3		0250A002AD	F23-2930-000	STAPLE-D2
	IR 105	✓	✓	✓
	IR 7200	✓	✓	✓
	IR 85	✓	✓	✓
SADDLE FINISHER K3 N		0250A002AD	F23-2930-000	STAPLE-D2
	IR 105	✓	✓	✓
	IR 7200	✓	✓	✓
	IR 8070	✓	✓	✓
	IR 85	✓	✓	✓
	IR 8500	✓	✓	✓
SADDLE FINISHER N2		0250A002AD	F23-2930-000	STAPLE-D2
	CLC 2620	✓	✓	✓
	CLC 3200	✓	✓	✓
	CLC 3220	✓	✓	✓
	IR C 2620	✓	✓	✓
	IR C 3200	✓	✓	✓
	IR C 3220	✓	✓	✓
S 3200	✓	✓	✓	
STAPLER SORTER-D1		0250A002AD	F23-2930-000	STAPLE-D2
	GP 30	✓	✓	✓
	GP 55	✓	✓	✓
	NP 1530	✓	✓	✓
	NP 1550	✓	✓	✓
	NP 2020	✓	✓	✓
	NP 2120	✓	✓	✓
	NP 3030	✓	✓	✓

**This document does not constitute an agreement for a price or sale. Prices shown are subject to change without notice. Contact your Katun sales representative for the current pricing information.

Canon



Katun Part Number

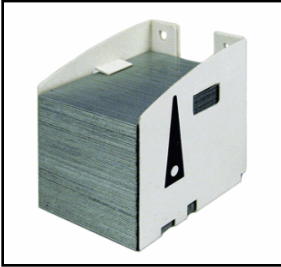
36749

Type Size (mm)
D2 26x25x32

Your Price:

Finisher	Model	OEM Part Number		
STAPLER SORTER- D1	NP 3050	0250A002AD	F23-2930-000	STAPLE-D2
	NP 6016	✓	✓	✓
	NP 6020	✓	✓	✓
	NP 6025	✓	✓	✓
	NP 6028	✓	✓	✓
	NP 6030	✓	✓	✓
	NP 6035	✓	✓	✓
	NP 6221	✓	✓	✓
	NP 6521	✓	✓	✓
	NP 6831	✓	✓	✓
STAPLER SORTER- D2	IR 5570	0250A002AD	F23-2930-000	STAPLE-D2
	NP 6028	✓	✓	✓
	NP 6035	✓	✓	✓
	NP 6216	✓	✓	✓
	NP 6220	✓	✓	✓
	NP 6221	✓	✓	✓
	NP 6251	✓	✓	✓
	NP 6330	✓	✓	✓
	NP 6521	✓	✓	✓
	NP 7850	✓	✓	✓
STAPLER SORTER- D3	NP 6028	0250A002AD	F23-2930-000	STAPLE-D2
	NP 6035	✓	✓	✓
	NP 6221	✓	✓	✓
	NP 6260	✓	✓	✓
	NP 6330	✓	✓	✓
	NP 6360	✓	✓	✓
STAPLER SORTER- N1	IR C 2100	0250A002AD	F23-2930-000	STAPLE-D2
	IR C 2105	✓	✓	✓

Canon



Katun Part Number

37413

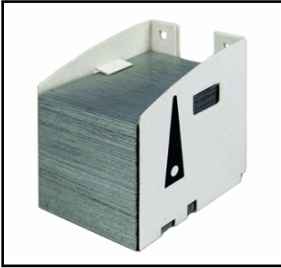
Type	Size (mm)
E1	35x28x35

Your Price:

Finisher	Model	OEM Part Number
FINISHER- C1		0251A001AA
	GP 285	✓
	GP 335	✓
	GP 405	✓
	IR 2016	✓
	IR 2018	✓
	IR 2020	✓
	IR 2022	✓
	IR 2025	✓
	IR 2030	✓
	IR 2318	✓
	IR 2320	✓
	IR 400	✓
	IR ADVANCE C 2020	✓
	IR ADVANCE C 2025	✓
	IR ADVANCE C 2030	✓
	IR ADVANCE C 5030	✓
	IR ADVANCE C 5035	✓
	IR ADVANCE C 5045	✓
IR ADVANCE C 5051	✓	
FINISHER- D1		0251A001AA
	GP 555	✓
	GP 605	✓
	GP 605P	✓
	IR 550	✓
	IR 600	✓
	IR ADVANCE 4025	✓
	IR ADVANCE 4035	✓
	IR ADVANCE 4045	✓
	IR ADVANCE 4051	✓
	IR ADVANCE 4225	✓
	IR ADVANCE 4235	✓
	IR ADVANCE 4245	✓
	IR ADVANCE 4251	✓
	IR ADVANCE 8085	✓
IR ADVANCE 8095	✓	
IR ADVANCE 8105	✓	
FINISHER- F1		0251A001AA
	IR 5000	✓
	IR 5020	✓
	IR 6000	✓
	IR 6020	✓
	IR ADVANCE C 2220	✓
	IR ADVANCE C 2225	✓
IR ADVANCE C 2230	✓	
FINISHER- G1		0251A001AA
	IMAGECLASS 4000	✓
	IR 3250	✓
	IR ADVANCE 4025	✓
	IR ADVANCE 4035	✓
	IR ADVANCE 4045	✓
	IR ADVANCE 4051	✓
	IR ADVANCE 4225	✓
	IR ADVANCE 4235	✓
	IR ADVANCE 4245	✓
	IR ADVANCE 4251	✓
	IR ADVANCE 8205	✓
	IR ADVANCE 8285	✓
	IR ADVANCE 8295	✓
	IR ADVANCE C 3320	✓
IR ADVANCE C 3325	✓	
IR ADVANCE C 3330	✓	
IR C 2100	✓	
IR C 2105	✓	

***This document does not constitute an agreement for a price or sale. Prices shown are subject to change without notice. Contact your Katun sales representative for the current pricing information.*

Canon



Katun Part Number

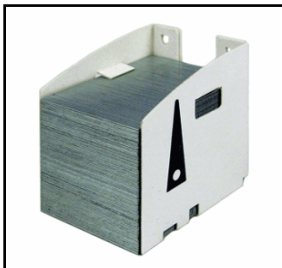
37413

Type	Size (mm)
E1	35x28x35

Your Price:

Finisher	Model	OEM Part Number
FINISHER-	LBP 72	0251A001AA ✓
FINISHER- H1		0251A001AA
	IR 1730	✓
	IR 1740	✓
	IR 1750	✓
	IR ADVANCE C 5535	✓
	IR ADVANCE C 5540	✓
	IR ADVANCE C 5550	✓
	IR ADVANCE C 5560	✓
	IR C 2100	✓
	IR C 2105	✓
SADDLE FINISHER D2		0251A001AA
	GP 555	✓
	GP 605	✓
	GP 605P	✓
	IR 550	✓
	IR 600	✓
SADDLE FINISHER F2		0251A001AA
	IR 5000	✓
	IR 6000	✓
	IR 6020	✓
SADDLE FINISHER H2		0251A001AA
	IMAGECLASS 4000	✓
	IR 3250	✓
	IR ADVANCE 4025	✓
	IR ADVANCE 4035	✓
	IR ADVANCE 4045	✓
	IR ADVANCE 4051	✓
	IR ADVANCE 4225	✓
	IR ADVANCE 4235	✓
	IR ADVANCE 4245	✓
	IR ADVANCE 4251	✓
	IR ADVANCE 8205	✓
	IR ADVANCE 8285	✓
	IR ADVANCE 8295	✓
	IR ADVANCE C 3320	✓
	IR ADVANCE C 3325	✓
	IR ADVANCE C 3330	✓
	IR C 2100	✓
	IR C 2105	✓
	LBP 72	✓
STAPLER SORTER- E1		0251A001AA
	NP 6028	✓
	NP 6045	✓
	NP 6050	✓
	NP 6085	✓
	NP 6251	✓
STAPLER SORTER- E2		0251A001AA
	NP 6028	✓
	NP 6045	✓
	NP 6050	✓
	NP 6085	✓
	NP 6251	✓
	NP 6260	✓
	NP 6360	✓
	NP 7500	✓
	NP 7850	✓

Canon



Katun Part Number

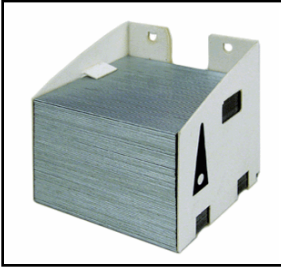
37413

Type	Size (mm)
E1	35x28x35

Your Price:

Finisher	Model	OEM Part Number
STAPLER SORTER- F1	CLC 1000	0251A001AA ✓
	CLC 1130	✓
	CLC 1150	✓
	CLC 1160	✓
	CLC 1180	✓
	CLC 3100	✓
	CLC 900	✓
	CLC 920	✓
	CLC 950	✓
	IR C 2105	✓
	STAPLER SORTER- F2	CLC 1100
CLC 1130		✓
CLC 1150		✓
CLC 1160		✓
CLC 1180		✓
CLC 3900		✓
CLC 5000		✓
CLC 900		✓
CLC 920		✓
CLC 950		✓
STAPLER SORTER- N1		IR C 2100
	IR C 2105	✓

Canon



Katun Part Number

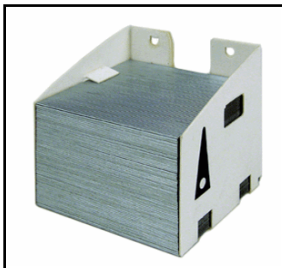
37414

Type	Size (mm)
G1	35x40x35

Your Price:

Finisher	Model	OEM Part Number	
FINISHER-A1		6788A001AA	STAPLE-G1
	IR ADVANCE C 2220	✓	✓
	IR ADVANCE C 5030	✓	✓
	IR ADVANCE C 5035	✓	✓
	IR ADVANCE C 5045	✓	✓
	IR ADVANCE C 5051	✓	✓
	IR ADVANCE C 9060	✓	✓
	IR ADVANCE C 9065	✓	✓
	IR ADVANCE C 9070	✓	✓
		6788A001AA	STAPLE-G1
FINISHER-K1			
	IR 105	✓	✓
	IR 7200	✓	✓
	IR 85	✓	✓
	IR 8500	✓	✓
	IR ADVANCE C 3520	✓	✓
	IR ADVANCE C 3525	✓	✓
	IR ADVANCE C 3530	✓	✓
	IR ADVANCE C 7260	✓	✓
	IR ADVANCE C 7270	✓	✓
	IR ADVANCE C 7280	✓	✓
	IR ADVANCE C 9280	✓	✓
	IR C 2100	✓	✓
		6788A001AA	STAPLE-G1
FINISHER-K1 N			
	IR 105	✓	✓
	IR 7200	✓	✓
	IR 8070	✓	✓
	IR 85	✓	✓
	IR 8500	✓	✓
	IR 9070	✓	✓
IR C 2100	✓	✓	
		6788A001AA	STAPLE-G1
FINISHER-K2			
	IR 105	✓	✓
	IR 7200	✓	✓
	IR 85	✓	✓
IR 8500	✓	✓	
		6788A001AA	STAPLE-G1
FINISHER-K2 N			
	IR 105	✓	✓
	IR 7200	✓	✓
	IR 8070	✓	✓
	IR 85	✓	✓
	IR 8500	✓	✓
IR 9070	✓	✓	
		6788A001AA	STAPLE-G1
FINISHER-N1			
	CLC 2620	✓	✓
	CLC 3200	✓	✓
	CLC 3220	✓	✓
	IR ADVANCE 8205	✓	✓
	IR ADVANCE 8285	✓	✓
	IR ADVANCE 8295	✓	✓
	IR C 2620	✓	✓
	IR C 3200	✓	✓
	IR C 3220	✓	✓
S 3200	✓	✓	

Canon



Katun Part Number

37414

Type	Size (mm)
G1	35x40x35

Finisher

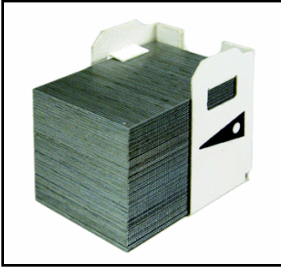
Model

OEM Part Number

		6788A001AA	STAPLE-G1
SADDLE FINISHER K3	IR 105	✓	✓
	IR 7200	✓	✓
	IR 85	✓	✓
	IR 8500	✓	✓
		6788A001AA	STAPLE-G1
SADDLE FINISHER K3 N	IR 105	✓	✓
	IR 7200	✓	✓
	IR 8070	✓	✓
	IR 85	✓	✓
	IR 8500	✓	✓
	IR 9070	✓	✓

Your Price:

Canon



Katun Part Number

37416

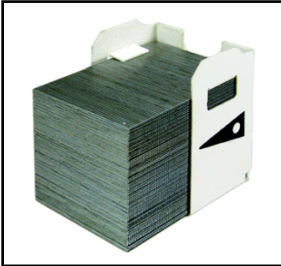
Type Size (mm)
J1 35x28x33

Your Price:

Finisher	Model	OEM Part Number			
		6707A001AA	6707A001AC	6707A001AD	STAPLE-J1
FINISHER-A1	IR ADVANCE C 2220	✓	✓	✓	✓
	IR ADVANCE C 5030	✓	✓	✓	✓
	IR ADVANCE C 5035	✓	✓	✓	✓
	IR ADVANCE C 5045	✓	✓	✓	✓
	IR ADVANCE C 5051	✓	✓	✓	✓
	IR ADVANCE C 9060	✓	✓	✓	✓
	IR ADVANCE C 9065	✓	✓	✓	✓
	IR ADVANCE C 9070	✓	✓	✓	✓
	IR ADVANCE C 9075	✓	✓	✓	✓
FINISHER-AA1	IR ADVANCE C 3520	✓	✓	✓	✓
	IR ADVANCE C 3525	✓	✓	✓	✓
	IR ADVANCE C 3530	✓	✓	✓	✓
	IMAGEPRESS C 6000	✓	✓	✓	✓
FINISHER-AC1	IR C 5058	✓	✓	✓	✓
	IR C 5068	✓	✓	✓	✓
	IR 5050	✓	✓	✓	✓
FINISHER-AD1	IR 5055	✓	✓	✓	✓
	IR 5065	✓	✓	✓	✓
	IR 5075	✓	✓	✓	✓
	GP 285	✓	✓	✓	✓
FINISHER-C1	GP 335	✓	✓	✓	✓
	GP 405	✓	✓	✓	✓
	IR 2016	✓	✓	✓	✓
	IR 2018	✓	✓	✓	✓
	IR 2020	✓	✓	✓	✓
	IR 2022	✓	✓	✓	✓
	IR 2025	✓	✓	✓	✓
	IR 2030	✓	✓	✓	✓
	IR 2318	✓	✓	✓	✓
	IR 2320	✓	✓	✓	✓
	IR 400	✓	✓	✓	✓
	IR ADVANCE C 2020	✓	✓	✓	✓
	IR ADVANCE C 2025	✓	✓	✓	✓
	IR ADVANCE C 2030	✓	✓	✓	✓
	IR ADVANCE C 5030	✓	✓	✓	✓
	IR ADVANCE C 5035	✓	✓	✓	✓
	IR ADVANCE C 5045	✓	✓	✓	✓
	IR ADVANCE C 5051	✓	✓	✓	✓
	FINISHER-E1	GP 285	✓	✓	✓
GP 335		✓	✓	✓	✓
GP 405		✓	✓	✓	✓
IR 400		✓	✓	✓	✓
IR ADVANCE 6055		✓	✓	✓	✓
IR ADVANCE 6065		✓	✓	✓	✓

**This document does not constitute an agreement for a price or sale. Prices shown are subject to change without notice. Contact your Katun sales representative for the current pricing information.

Canon



Katun Part Number

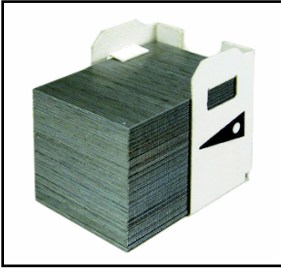
37416

Type Size (mm)
J1 35x28x33

Your Price:

Finisher	Model	OEM Part Number				
FINISHER- E1	IR ADVANCE 6075	6707A001AA	6707A001AC	6707A001AD	STAPLE-J1	
	IR ADVANCE C 5235	✓	✓	✓	✓	
	IR ADVANCE C 5240	✓	✓	✓	✓	
	IR ADVANCE C 5250	✓	✓	✓	✓	
	IR ADVANCE C 5255	✓	✓	✓	✓	
FINISHER- J1		6707A001AA	6707A001AC	6707A001AD	STAPLE-J1	
	IR 2200	✓	✓	✓	✓	
	IR 2220	✓	✓	✓	✓	
	IR 2800	✓	✓	✓	✓	
	IR 3300	✓	✓	✓	✓	
	IR ADVANCE 4525	✓	✓	✓	✓	
	IR ADVANCE 4535	✓	✓	✓	✓	
	IR ADVANCE 4545	✓	✓	✓	✓	
	IR ADVANCE 4551	✓	✓	✓	✓	
	IR ADVANCE C 5235	✓	✓	✓	✓	
	IR ADVANCE C 5240	✓	✓	✓	✓	
	FINISHER- L1		6707A001AA	6707A001AC	6707A001AD	STAPLE-J1
		IR 1600	✓	✓	✓	✓
IR 2000		✓	✓	✓	✓	
IR 2010		✓	✓	✓	✓	
IR ADVANCE C 7260		✓	✓	✓	✓	
IR ADVANCE C 7270		✓	✓	✓	✓	
IR ADVANCE C 7280		✓	✓	✓	✓	
FINISHER- P1		6707A001AA	6707A001AC	6707A001AD	STAPLE-J1	
	IR 2570	✓	✓	✓	✓	
	IR 3170	✓	✓	✓	✓	
	IR ADVANCE 6255	✓	✓	✓	✓	
	IR ADVANCE 6265	✓	✓	✓	✓	
	IR ADVANCE 6275	✓	✓	✓	✓	
	IR ADVANCE 8205	✓	✓	✓	✓	
	IR ADVANCE 8285	✓	✓	✓	✓	
	IR ADVANCE 8295	✓	✓	✓	✓	
	IR C 3100	✓	✓	✓	✓	
IR C 3180	✓	✓	✓	✓		
FINISHER- Q3		6707A001AA	6707A001AC	6707A001AD	STAPLE-J1	
	IR 2270	✓	✓	✓	✓	
	IR 2570	✓	✓	✓	✓	
	IR 2870	✓	✓	✓	✓	
	IR 3170	✓	✓	✓	✓	
	IR 3570	✓	✓	✓	✓	
	IR 4570	✓	✓	✓	✓	
	IR C 2570	✓	✓	✓	✓	
	IR C 3170	✓	✓	✓	✓	
IR C 3180	✓	✓	✓	✓		
FINISHER- R1		6707A001AA	6707A001AC	6707A001AD	STAPLE-J1	
	IR 6870	✓	✓	✓	✓	
	IR 7086	✓	✓	✓	✓	
	IR 7095	✓	✓	✓	✓	
	IR 7105	✓	✓	✓	✓	
	IR ADVANCE 400	✓	✓	✓	✓	
	IR ADVANCE 500	✓	✓	✓	✓	
	IR C 5800	✓	✓	✓	✓	
	IR C 5870	✓	✓	✓	✓	
	IR C 5880	✓	✓	✓	✓	
	IR C 6800	✓	✓	✓	✓	
	IR C 6870	✓	✓	✓	✓	
	IR C 6880	✓	✓	✓	✓	

Canon



Katun Part Number

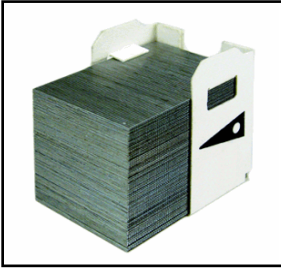
37416

Type Size (mm)
J1 35x28x33

Your Price:

Finisher	Model	OEM Part Number			STAPLE-J1
		6707A001AA	6707A001AC	6707A001AD	
FINISHER-S1	IR 2230	✓	✓	✓	✓
	IR 2270	✓	✓	✓	✓
	IR 2830	✓	✓	✓	✓
	IR 2870	✓	✓	✓	✓
	IR 3025	✓	✓	✓	✓
	IR 3030	✓	✓	✓	✓
	IR 3035	✓	✓	✓	✓
	IR 3045	✓	✓	✓	✓
	IR 3225	✓	✓	✓	✓
	IR 3230	✓	✓	✓	✓
	IR 3235	✓	✓	✓	✓
	IR 3245	✓	✓	✓	✓
	IR 3530	✓	✓	✓	✓
	IR 3570	✓	✓	✓	✓
	IR 4570	✓	✓	✓	✓
	IR ADVANCE C 250	✓	✓	✓	✓
	IR ADVANCE C 350	✓	✓	✓	✓
IR ADVANCE C 351	✓	✓	✓	✓	
		6707A001AA	6707A001AC	6707A001AD	STAPLE-J1
FINISHER-T1	IR 5570	✓	✓	✓	✓
		6707A001AA	6707A001AC	6707A001AD	STAPLE-J1
FINISHER-U1	IR 2016	✓	✓	✓	✓
	IR 2020	✓	✓	✓	✓
	IR ADVANCE C 3320	✓	✓	✓	✓
	IR ADVANCE C 3325	✓	✓	✓	✓
	IR ADVANCE C 3330	✓	✓	✓	✓
		6707A001AA	6707A001AC	6707A001AD	STAPLE-J1
FINISHER-U2	IR 2018	✓	✓	✓	✓
	IR 2022	✓	✓	✓	✓
	IR 2025	✓	✓	✓	✓
	IR 2030	✓	✓	✓	✓
	IR 2318	✓	✓	✓	✓
	IR 2320	✓	✓	✓	✓
	IR 2420	✓	✓	✓	✓
	IR 2422	✓	✓	✓	✓
		6707A001AA	6707A001AC	6707A001AD	STAPLE-J1
FINISHER-X1	CLC 4040	✓	✓	✓	✓
	CLC 5151	✓	✓	✓	✓
	IR ADVANCE 8505	✓	✓	✓	✓
	IR ADVANCE 8585	✓	✓	✓	✓
	IR ADVANCE 8595	✓	✓	✓	✓
	IR ADVANCE C 7565	✓	✓	✓	✓
	IR ADVANCE C 7570	✓	✓	✓	✓
	IR ADVANCE C 7580	✓	✓	✓	✓
	IR C 4080	✓	✓	✓	✓
	IR C 4580	✓	✓	✓	✓
	IR C 5180	✓	✓	✓	✓
	IR C 5185	✓	✓	✓	✓
		6707A001AA	6707A001AC	6707A001AD	STAPLE-J1
FINISHER-Z1	IR ADVANCE C 255	✓	✓	✓	✓
	IR ADVANCE C 256	✓	✓	✓	✓
	IR ADVANCE C 355	✓	✓	✓	✓
	IR ADVANCE C 356	✓	✓	✓	✓
	IR C 2880	✓	✓	✓	✓
	IR C 3080	✓	✓	✓	✓
	IR C 3380	✓	✓	✓	✓

Canon



Katun Part Number

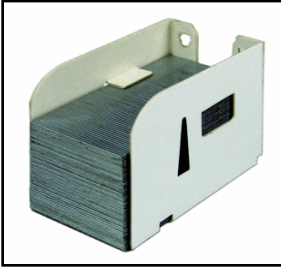
37416

Type Size (mm)
J1 35x28x33

Your Price:

Finisher	Model	OEM Part Number			
		6707A001AA	6707A001AC	6707A001AD	STAPLE-J1
SADDLE FINISHER AE2	IR 3025	✓	✓	✓	✓
	IR 3030	✓	✓	✓	✓
	IR 3035	✓	✓	✓	✓
	IR 3045	✓	✓	✓	✓
	IR 3225	✓	✓	✓	✓
	IR 3230	✓	✓	✓	✓
	IR 3235	✓	✓	✓	✓
	IR 3245	✓	✓	✓	✓
SADDLE FINISHER G1	IR 2200	✓	✓	✓	✓
	IR 2220	✓	✓	✓	✓
	IR 2800	✓	✓	✓	✓
	IR 3300	✓	✓	✓	✓
	IR 85	✓	✓	✓	✓
	IR 8500	✓	✓	✓	✓
SADDLE FINISHER Q2	IR C 3100	✓	✓	✓	✓
	IR C 3170	✓	✓	✓	✓
SADDLE FINISHER Q4	IR 2270	✓	✓	✓	✓
	IR 2570	✓	✓	✓	✓
	IR 2870	✓	✓	✓	✓
	IR 3170	✓	✓	✓	✓
	IR C 2570	✓	✓	✓	✓
SADDLE FINISHER R2	IR 6870	✓	✓	✓	✓
	IR C 5800	✓	✓	✓	✓
	IR C 5880	✓	✓	✓	✓
	IR C 6800	✓	✓	✓	✓
	IR C 6870	✓	✓	✓	✓
	IR C 6880	✓	✓	✓	✓
SADDLE FINISHER	IR 5570	✓	✓	✓	✓
SADDLE FINISHER W2	CLC 4040	✓	✓	✓	✓
	CLC 5151	✓	✓	✓	✓
	IR C 5185	✓	✓	✓	✓

Canon



Katun Part Number

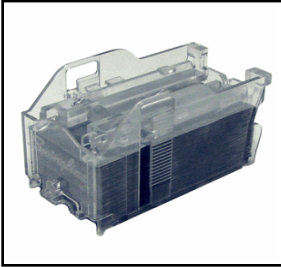
37417

Type	Size (mm)
L1	35x21x25

Your Price:

Finisher	Model	OEM Part Number	
FINISHER- E1		0253A001AA	STAPLE L1
	GP 285	✓	✓
	GP 335	✓	✓
	GP 405	✓	✓
	IR 400	✓	✓
	IR ADVANCE 6055	✓	✓
	IR ADVANCE 6065	✓	✓
	IR ADVANCE 6075	✓	✓
	IR ADVANCE C 5235	✓	✓
	IR ADVANCE C 5240	✓	✓
	IR ADVANCE C 5250	✓	✓
	IR ADVANCE C 5255	✓	✓
FINISHER- J1		0253A001AA	STAPLE L1
	IR 2200	✓	✓
	IR 2220	✓	✓
	IR 2800	✓	✓
	IR 3300	✓	✓
	IR ADVANCE 4525	✓	✓
	IR ADVANCE 4535	✓	✓
	IR ADVANCE 4545	✓	✓
	IR ADVANCE 4551	✓	✓
	IR ADVANCE C 5235	✓	✓
	IR ADVANCE C 5240	✓	✓
	STAPLER SORTER- M1		0253A001AA
GP 210		✓	✓
GP 215		✓	✓
GP 220		✓	✓
GP 225		✓	✓

Canon



Katun Part Number

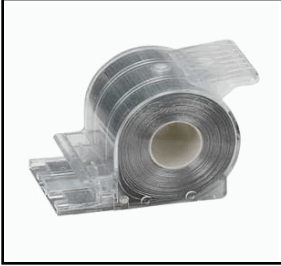
37664

Type	Size (mm)
P1	61.5x33x34

Your Price:

Finisher	Model	OEM Part Number	
FINISHER- A1		1008B001AA	STAPLE-P1
	IR ADVANCE C 2220	✓	✓
	IR ADVANCE C 5030	✓	✓
	IR ADVANCE C 5035	✓	✓
	IR ADVANCE C 5045	✓	✓
	IR ADVANCE C 5051	✓	✓
	IR ADVANCE C 9060	✓	✓
	IR ADVANCE C 9065	✓	✓
	IR ADVANCE C 9070	✓	✓
		1008B001AA	STAPLE-P1
FINISHER- D1			
	GP 555	✓	✓
	GP 605	✓	✓
	GP 605P	✓	✓
	IR 550	✓	✓
	IR 600	✓	✓
	IR ADVANCE 4025	✓	✓
	IR ADVANCE 4035	✓	✓
	IR ADVANCE 4045	✓	✓
	IR ADVANCE 4051	✓	✓
	IR ADVANCE 4225	✓	✓
	IR ADVANCE 4235	✓	✓
	IR ADVANCE 4245	✓	✓
	IR ADVANCE 4251	✓	✓
	IR ADVANCE 8085	✓	✓
	IR ADVANCE 8095	✓	✓
IR ADVANCE 8105	✓	✓	
		1008B001AA	STAPLE-P1
FINISHER- K1			
	IR 105	✓	✓
	IR 7200	✓	✓
	IR 85	✓	✓
	IR 8500	✓	✓
	IR ADVANCE C 3520	✓	✓
	IR ADVANCE C 3525	✓	✓
	IR ADVANCE C 3530	✓	✓
	IR ADVANCE C 7260	✓	✓
	IR ADVANCE C 7270	✓	✓
	IR ADVANCE C 7280	✓	✓
	IR ADVANCE C 9280	✓	✓
	IR C 2100	✓	✓
		1008B001AA	STAPLE-P1
SADDLE FINISHER AB2		✓	✓
	IMAGEPRESS 1110	✓	✓
	IMAGEPRESS 1125	✓	✓
	IMAGEPRESS 1135	✓	✓
	IMAGEPRESS C 1	✓	✓
	IMAGEPRESS C 6000	✓	✓
		1008B001AA	STAPLE-P1
SADDLE FINISHER AD2			
	IR 5050	✓	✓
	IR 5055	✓	✓
	IR 5065	✓	✓
		1008B001AA	STAPLE-P1
SADDLE FINISHER V2			
	IR 7086	✓	✓
	IR 7095	✓	✓
		1008B001AA	STAPLE-P1
		✓	✓
		✓	✓

Canon



Katun Part Number

37796

Type Size (mm)
N1 76x46x46

Your Price:

Finisher	Model	OEM Part Number	
FINISHER-K1		1007B001AA	STAPLE-N1
	IR 105	✓	✓
	IR 7200	✓	✓
	IR 85	✓	✓
	IR 8500	✓	✓
	IR ADVANCE C 3520	✓	✓
	IR ADVANCE C 3525	✓	✓
	IR ADVANCE C 3530	✓	✓
	IR ADVANCE C 7260	✓	✓
	IR ADVANCE C 7270	✓	✓
	IR ADVANCE C 7280	✓	✓
	IR ADVANCE C 9280	✓	✓
	IR C 2100	✓	✓
FINISHER-Q1		1007B001AA	STAPLE-N1
	IR C 3100	✓	✓
FINISHER-V1		1007B001AA	STAPLE-N1
	IR 7086	✓	✓
	IR 7095	✓	✓
	IR 7105	✓	✓
	IR ADVANCE 6555	✓	✓
	IR ADVANCE 6565	✓	✓
	IR ADVANCE 6575	✓	✓
	IR ADVANCE 8505	✓	✓
	IR ADVANCE 8585	✓	✓
IR ADVANCE 8595	✓	✓	
FINISHER-V2		1007B001AA	STAPLE-N1
	IR ADVANCE C 7565	✓	✓
	IR ADVANCE C 7570	✓	✓
IR ADVANCE C 7580	✓	✓	
FINISHER-W1		1007B001AA	STAPLE-N1
	CLC 4040	✓	✓
	CLC 5151	✓	✓
	IR ADVANCE 8505	✓	✓
	IR ADVANCE 8585	✓	✓
	IR ADVANCE 8595	✓	✓
	IR C 4080	✓	✓
	IR C 4580	✓	✓
	IR C 5180	✓	✓
IR C 5185	✓	✓	
SADDLE FINISHER AB2		1007B001AA	STAPLE-N1
	IMAGEPRESS 1110	✓	✓
	IMAGEPRESS 1125	✓	✓
	IMAGEPRESS 1135	✓	✓
	IMAGEPRESS C 1	✓	✓
	IMAGEPRESS C 6000	✓	✓
IMAGEPRESS C 7000	✓	✓	

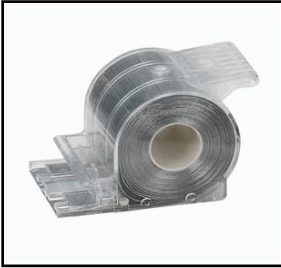
Canon

Finisher

Model

OEM Part Number

		1007B001AA	STAPLE-N1
SADDLE FINISHER V2	IR 7086	✓	✓
	IR 7095	✓	✓
	IR 7105	✓	✓



Katun Part Number

37796

<u>Type</u>	<u>Size (mm)</u>
N1	76x46x46

Your Price: