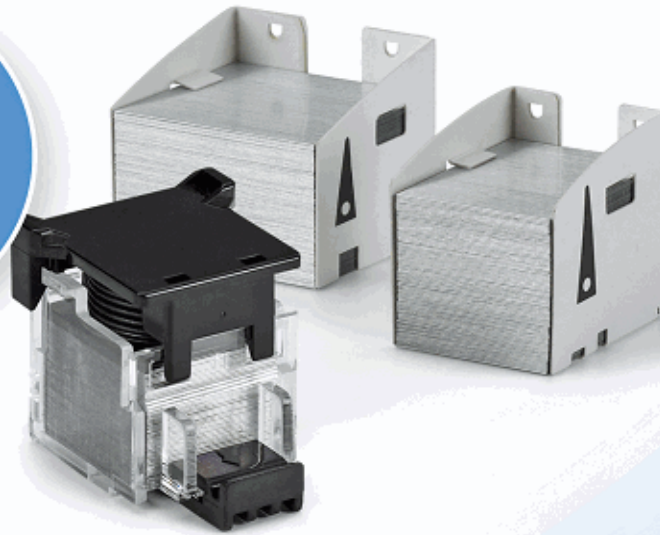


# STAPLE CARTRIDGE

*Cross-Reference Guide*

FOR  
COPIERS  
& MFPS

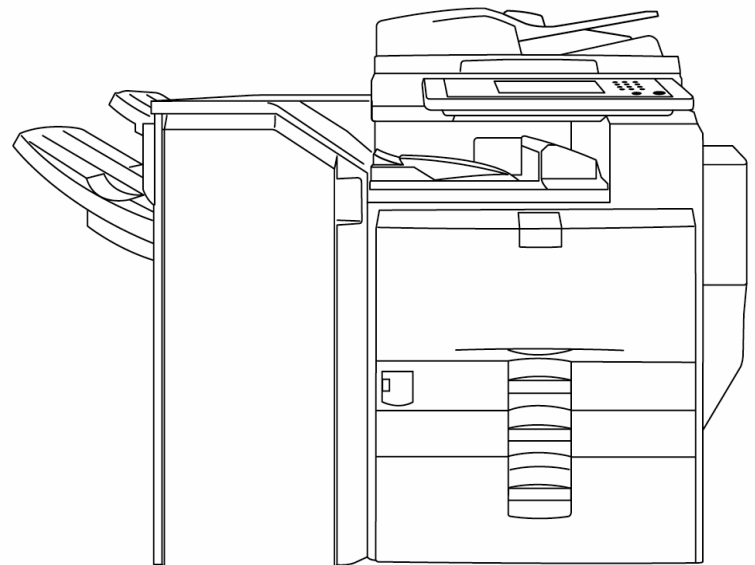


Europe 2020

*Swingline*®

**IMPORTANT NOTE:** In order to purchase the correct staples for your machine, it is important that you reference the **FINISHER** Model Identification Number. **DO NOT purchase staples based on the copier model number alone.**

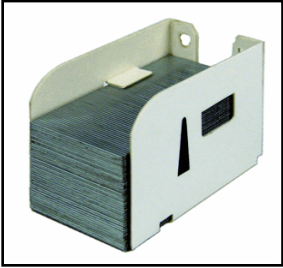
To locate the FINISHER Model Identification Number, first identify the finisher unit in relation to the copier unit. In most instances you will need to separate the finisher unit from the copier unit to access the model information. The location of the FINISHER Model Identification Number will vary depending on the model manufacturer.



Finisher Unit

Copier/MFP Unit

## Lexmark



### Katun Part Number

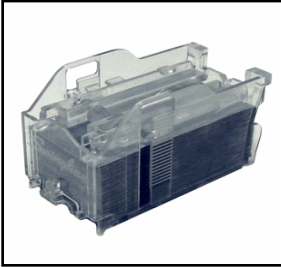
**37417**

Type	Size (mm)
L1	35x21x25

### Your Price:

Finisher	Model	OEM Part Number
C 910 FINISHER		11K3188
	LEXMARK C 912	✓
C 912 FINISHER		11K3188
	LEXMARK C 912	✓
T 620 FINISHER		11K3188
	LEXMARK T 630	✓
	LEXMARK T 632	✓
	LEXMARK T 634	✓
T 630 FINISHER		11K3188
	LEXMARK T 630	✓
	LEXMARK T 632	✓
	LEXMARK T 634	✓

## Lexmark



### Katun Part Number

**37664**

Type	Size (mm)
P1	61.5x33x34

Your Price:

Finisher	Model	OEM Part Number
		25A0013
LEXMARK 3500 SHEET 3-HOLE I	LEXMARK C 950	✓
	LEXMARK X 950	✓
	LEXMARK X 952	✓
	LEXMARK X 954	✓
		25A0013
LEXMARK 3500 SHEET 3-HOLE II	LEXMARK C 935	✓
	LEXMARK X 940	✓
	LEXMARK X 945	✓
		25A0013
LEXMARK 3-HOLE	LEXMARK W 840	✓
	LEXMARK W 850	✓
	LEXMARK X 850	✓
	LEXMARK X 852	✓
	LEXMARK X 854	✓
	LEXMARK X 860	✓
	LEXMARK X 862	✓
	LEXMARK X 864	✓
		25A0013
LEXMARK 500 SHEET I	LEXMARK C 792	✓
	LEXMARK X 792	✓
		25A0013
LEXMARK 500 SHEET II	LEXMARK C 792	✓
	LEXMARK X 792	✓
		25A0013
STAPLE SMART II	LEXMARK T 650	✓
	LEXMARK T 652	✓
	LEXMARK T 654	✓
	LEXMARK T 656	✓
	LEXMARK X 651	✓
	LEXMARK X 652	✓
	LEXMARK X 654	✓
	LEXMARK X 656	✓
	LEXMARK X 658	✓