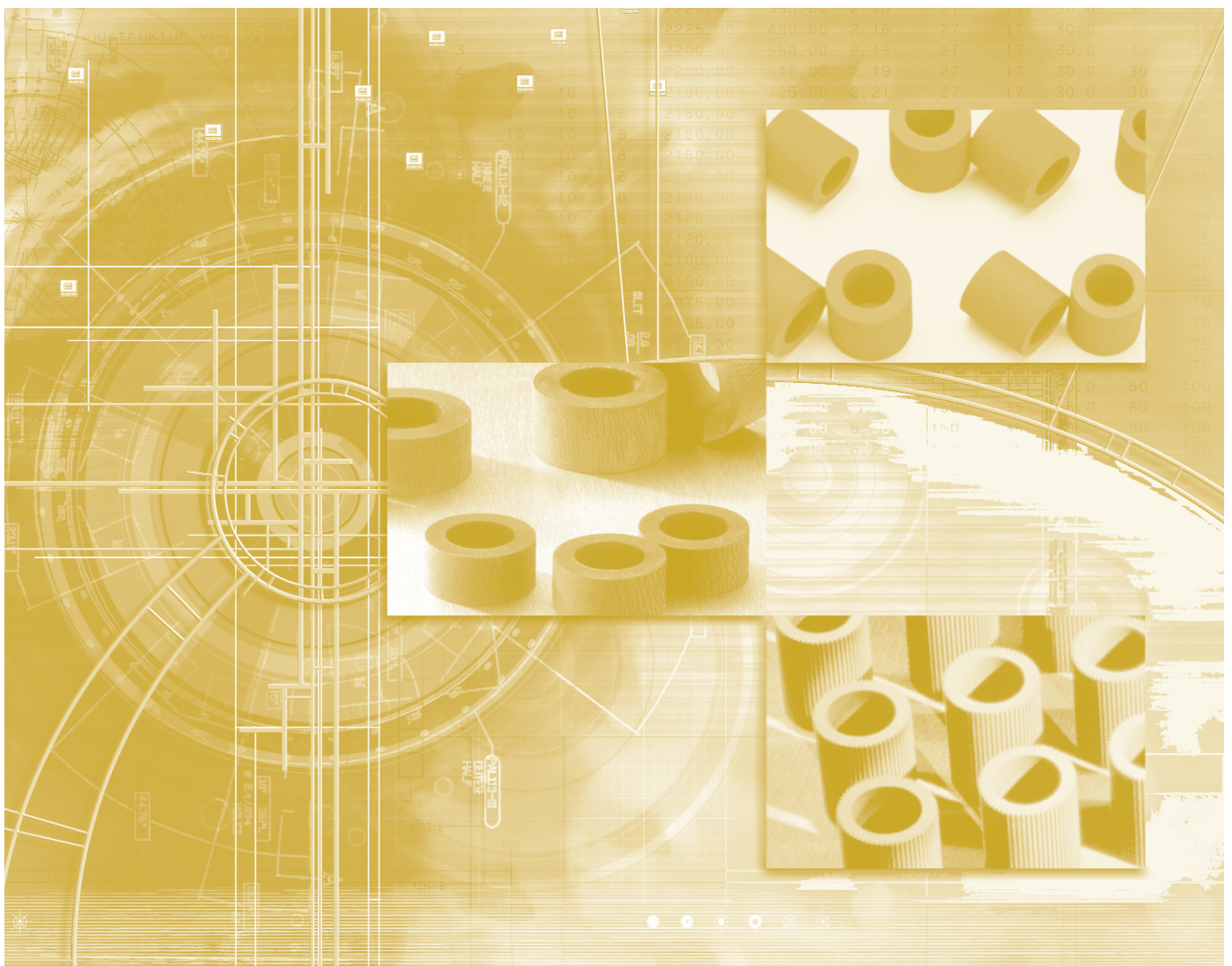


Feed Component Guide

for Kyocera Mita Office Equipment



KATUN®

This guide is designed to help you order high quality, cost-effective Katun feed components for the Toshiba office equipment listed below. You can identify the correct Katun part number for a particular feed component in either of two ways:

1. **Cross-reference Katun part numbers with the OEM part number for a given feed component.**
2. **Locate the feed component in the appropriate machine illustration and then reference its identification letter in the product listing.**

All Katun feed components are sold “tire only” unless otherwise noted.

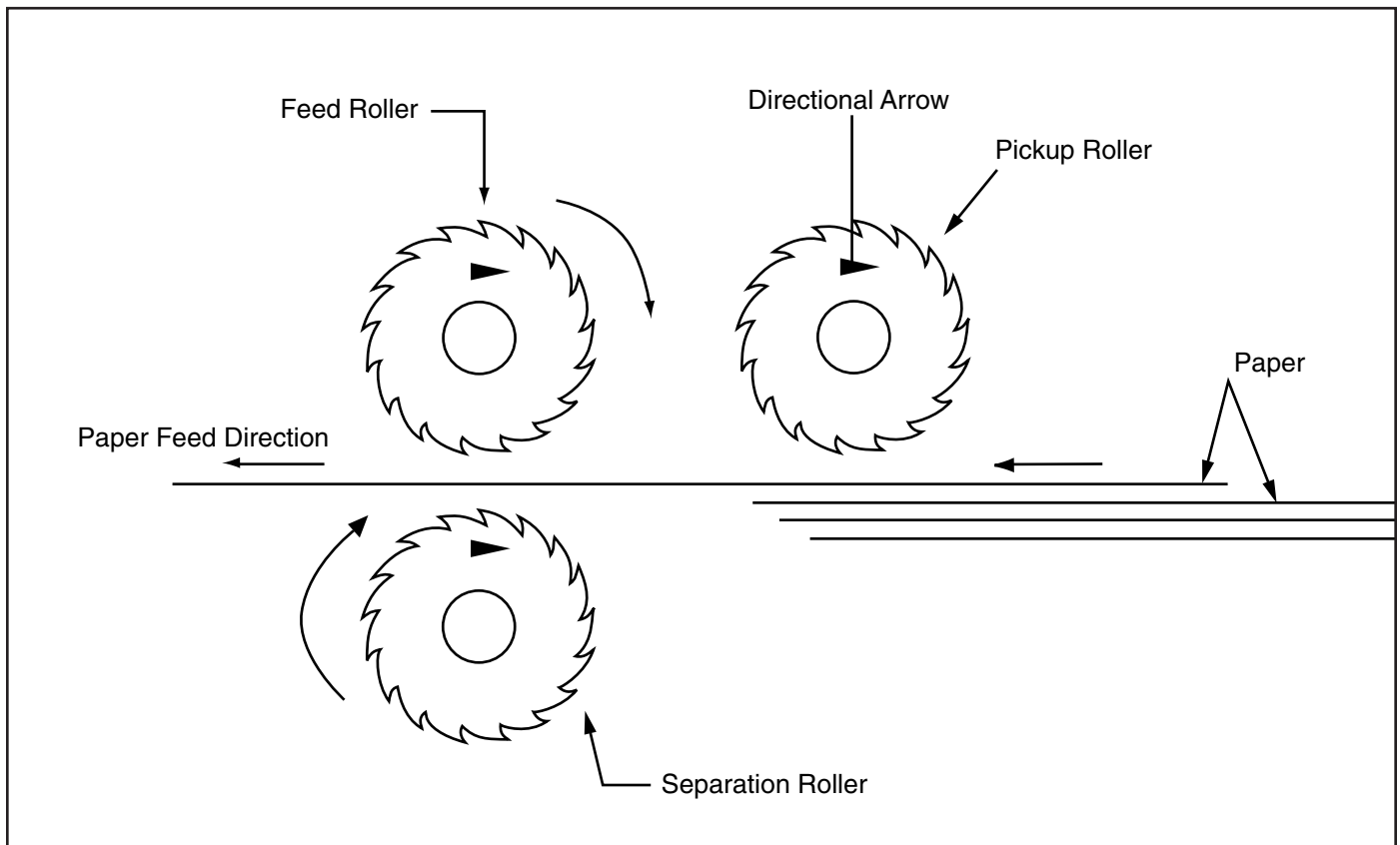
Kyocera Mita	Page Number
KM 4230	3
KM 4530	4
KM 6230	5

Katun feed components are sold “tire only” unless otherwise noted.

For the most current feed component cross-reference information, visit www.katun.com/resourcecenter/feedcompguide.html

Installing Katun Feed Tires? Proper Installation Ensures Excellent Performance

Most "crepe-style" (textured surface) Katun tire-only feed tires are imprinted with a directional arrow or mark. When installing, it is essential that the imprinted arrow points in the direction of required tire rotation. In certain machine applications, this may mean that the side for the tire that bears the imprinted arrow faces toward the technician; in other applications, the arrow side may face toward the rear of the machine.



Feed Component Care Tips

- Keep bags sealed tightly until feed components will be installed.
- Store feed components in a cool, dry, and dark location.
- Clean feed components ONLY with soap and warm water.

Kyocera Mita KM 4230 (with SRDF-1, MD-10)

Description	OEM PN	Katun PN
-------------	--------	----------

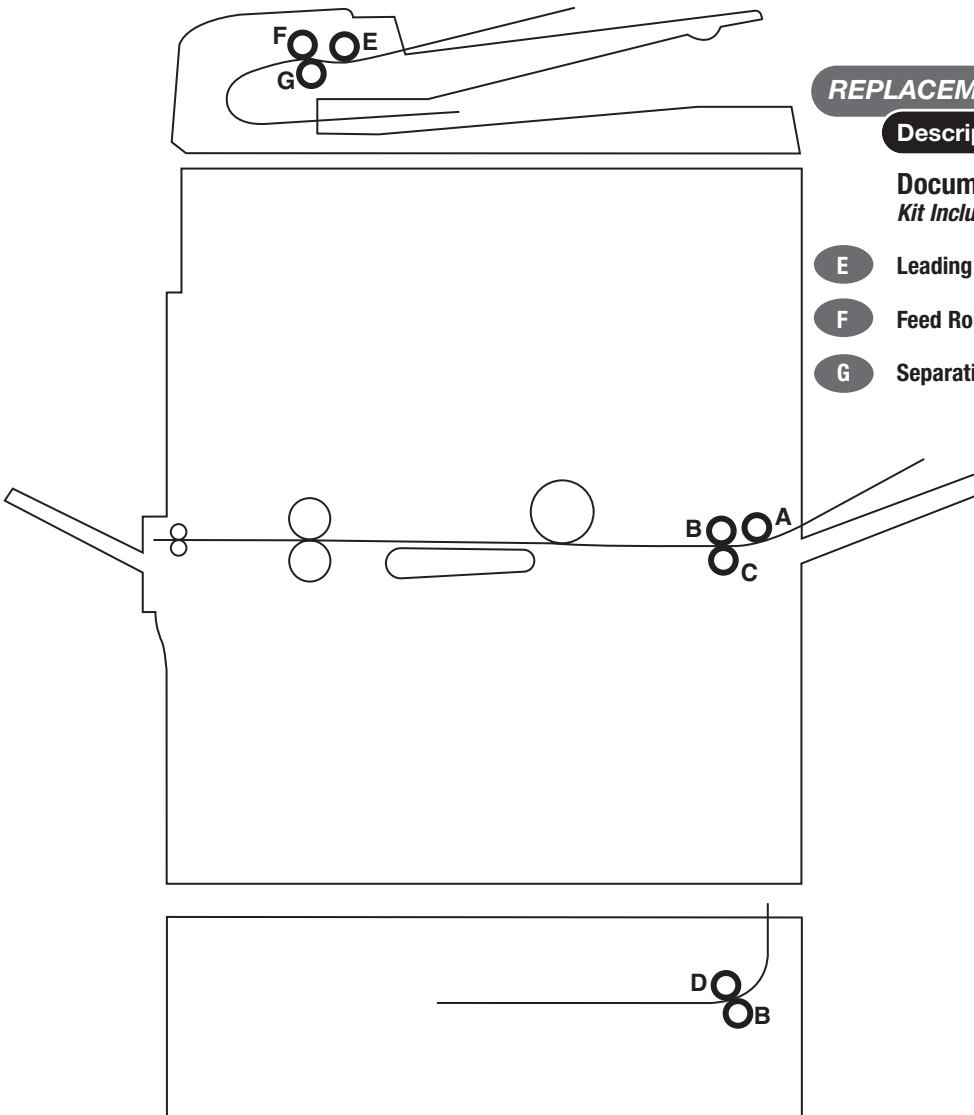
A Feed Roller	34806090	12115
B Bypass Upper Separation Roller	61706770	20148
C Leading Feed Roller	33906060	20148
D Pickup Roller	60906161	12115
E Leading Feed Roller	3AL07010	20145
F Feed Roller	3AL07020	20146
G Separation Roller	3AL07350	20147

REPLACEMENT KIT

Description	Katun PN
-------------	----------

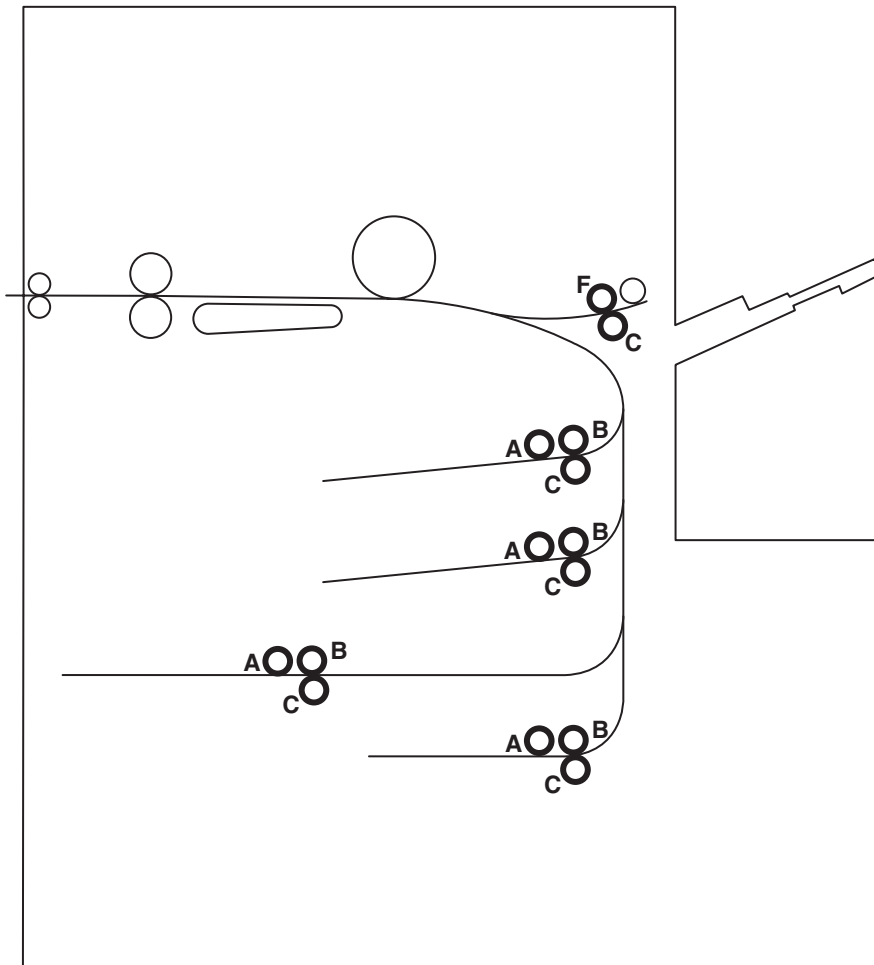
Document Feeder Replacement Kit **21751**
Kit Includes:

E Leading Feed Roller	3AL07010	20145
F Feed Roller	3AL07020	20146
G Separation Roller	3AL07350	20147



Kyocera Mita KM 4530

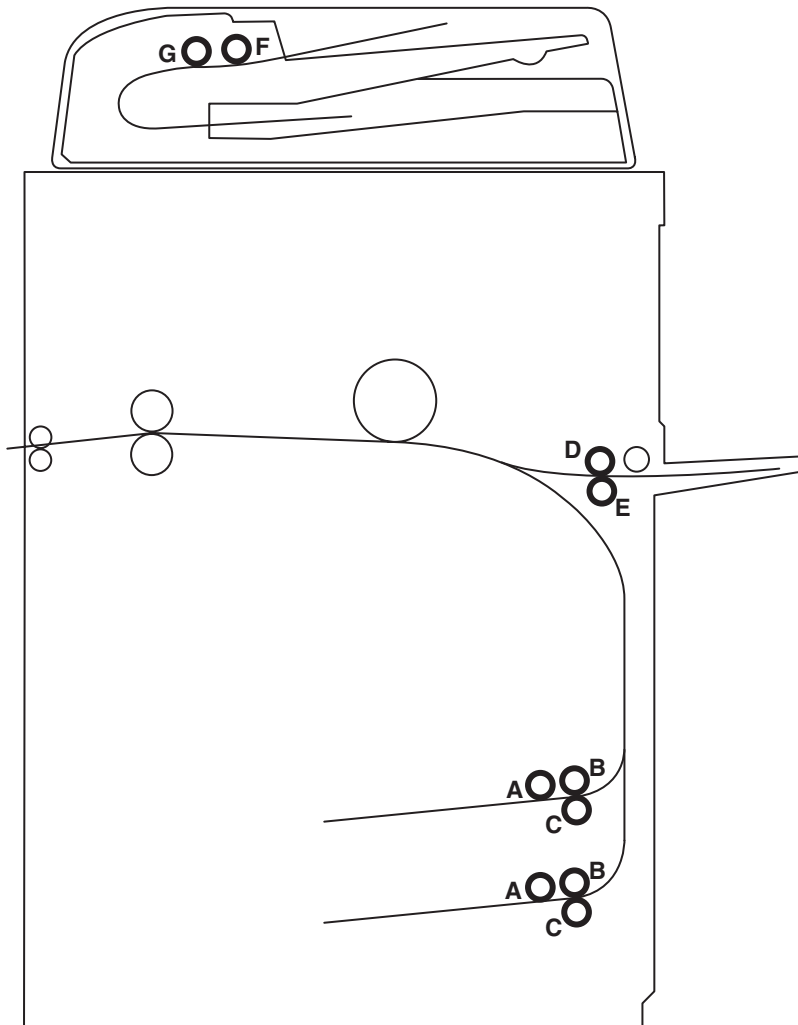
	Description	OEM PN	Katun PN
A	Leading Feed Roller (with hub assembly)	2BC06810	27043
B	Feed Roller (with hub assembly)	2BC06900	27044
C	Lower Feed Roller	33906060	20148
D	Leading Feed Roller	3BC07010	22681
E	Separation Roller	3BC07020	22682
F	Bypass Upper Separation Roller	61706770	20148

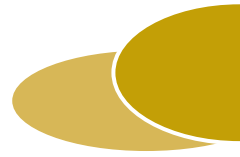


Kyocera Mita KM 6230

Description	OEM PN	Katun PN
-------------	--------	----------

A	Pickup Roller	60906161	12115
B	Feed Roller	36706290	27471
C	Leading Feed Roller	33906060	20148
D	Bypass Upper Separation Roller	61706770	20148
E	Bypass Lower Separation Roller	61706780	20757
F	Leading Feed Roller	3BC07010	22681
G	Separation Roller	3BC07020	22682



**Katun Corporation**

Toll-Free Phone: 1-800-328-2965

Katun Canada Inc.

Toll-Free Phone: 1-800-634-5344

Katun U.K. Ltd.

Freephone: 0800-289753

Katun Benelux B.V.

Telephone: 31 (0) 183-696969

Katun Germany GmbH

Telefon: 02131/34 46-0

Katun France S.A.R.L.

Numéro Vert: 0800-909-555

Katun Italy s.r.l.

Telefono: +39-02-414-99-71

Katun Spain S.A.

Teléfono: 91-676-45-51

Katun Portugal S.A.

Telefone: 21-499 8960

Katun Sweden AB

Telefon: +46 0300-515-50

Katun Mexico S.A. de C.V.

Llame sin costo al: 01-800-112-5886

Katun Singapore Pte Ltd

Telephone: (65) 6788-3350

Katun Argentina s.r.l.

Teléfono: 54 (11) 4103-9200

Katun Brasil Ltda.

Telefone: (5511) 3647-3270

Katun (Australia) Corporation Pty Limited

Telephone: 1800 998 826

For the most current feed component cross-reference information, visit

www.katun.com/resourcecenter/feedcompguide.html