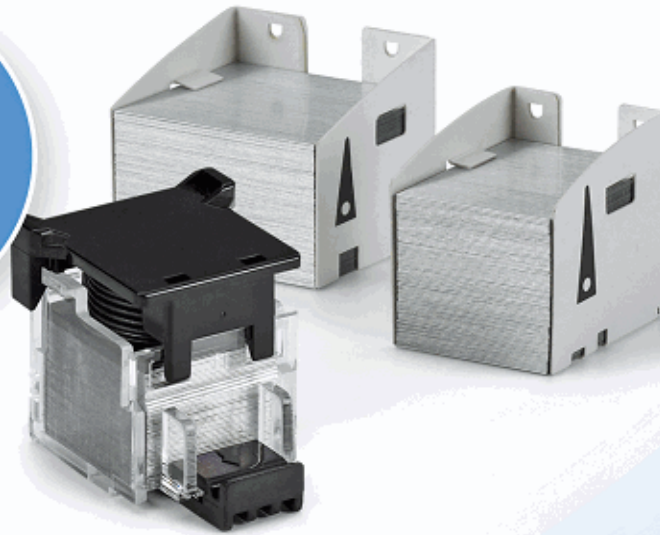


STAPLE CARTRIDGE

Cross-Reference Guide

FOR
COPIERS
& MFPS



North America 2020

Swingline®

IMPORTANT NOTE: In order to purchase the correct staples for your machine, it is important that you reference the **FINISHER** Model Identification Number. **DO NOT purchase staples based on the copier model number alone.**

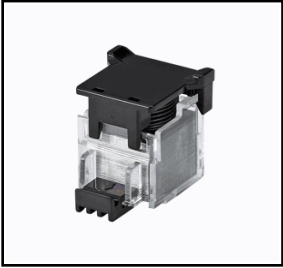
To locate the FINISHER Model Identification Number, first identify the finisher unit in relation to the copier unit. In most instances you will need to separate the finisher unit from the copier unit to access the model information. The location of the FINISHER Model Identification Number will vary depending on the model manufacturer.



Finisher Unit

Copier/MFP Unit

Hewlett Packard



<u>Finisher</u>	<u>Model</u>	<u>OEM Part Number</u>
N/A		C3772A
	LJ 8000	✓
	LJ 8100	✓
	LJ 8150	✓
	MOPIER 240	✓
	MOPIER 320	✓

Katun Part Number

36749

<u>Type</u>	<u>Size (mm)</u>
D2	26x25x32

Your Price: